



# NATIONAL CONFERENCE ON PSYCHOTHERAPEUTIC ASSESSMENTS AND INTERVENTIONS IN PSYCHO-ONCOLOGY



**Focal theme: A Multidisciplinary  
Approach in Providing Holistic  
and Integrated Care**

3-5 January, 2025

JLN Auditorium, AIIMS New Delhi

**Organized By: AIIMS, New Delhi**

Department of Psychiatry

Department of Medical Oncology

Department of Onco-Anesthesia and Palliative  
Medicine

College of Nursing

**Organizing Partner**

We Avec U Mental Health Foundation, Noida





# NATIONAL CONFERENCE ON PSYCHOTHERAPEUTIC ASSESSMENTS AND INTERVENTIONS IN PSYCHO-ONCOLOGY

## ABOUT THE HOST AND VENUE



The conference will be held at the All India Institute of Medical Sciences (AIIMS), New Delhi, a multi-specialty largest public hospital and medical college in India. Established in 1956, it is the premier medical institute of India and is an institute of national importance. AIIMS New Delhi was ranked 123rd in the world in 2023 and first in South Asia in the category of Life Sciences and Medicine by QS W U R in 2022. The institute was also featured in the World's best hospital 2020- Top 100 by Newsweek and ranked 22nd in the world by Ceoworld Magazine in 2022. AIIMS, New Delhi is a sprawling campus that is situated in the heart of New Delhi

## CONCEPT NOTE

In the field of psycho-oncology, the importance of psychological assessments and interventions cannot be overstated. Psychological evaluation and assessments play a crucial role in understanding the psychological impact of cancer diagnosis and treatment on patients. These assessments help identify emotional distress, coping mechanisms, and support needs of individuals facing cancer, allowing for tailored interventions to be implemented. This national conference aims to address the psychological and emotional challenges that cancer patients may experience, such as anxiety, depression, fear, and existential distress. By providing psychological support and counselling, these interventions can help patients navigate the complex emotions associated with their diagnosis and improve their overall quality of life. Furthermore, psychological assessments and interventions in psych oncology contribute to holistic cancer care by addressing the mental health aspect of the disease. They not only support patients in coping with the emotional burden of cancer but also enhance their resilience, coping skills, and ability to maintain a positive outlook during treatment. This conference highlights the significance of psychological assessments and interventions in addressing the psychological well-being of cancer patients. By integrating a multidisciplinary approach into cancer care, healthcare professionals can better meet the holistic needs of individuals facing cancer and improve their overall treatment outcomes.





# NATIONAL CONFERENCE ON PSYCHOTHERAPEUTIC ASSESSMENTS AND INTERVENTIONS IN PSYCHO-ONCOLOGY

## ORGANIZING CHIEF PATRONS

### CHAIRPERSONS



**Pratap Sharan**  
Prof & Head  
Department of Psychiatry  
AIIMS- New Delhi



**Sushma Bhatnagar**  
Prof & Head  
Dept. of Onco-Anesthesia  
& Palliative Medicine,  
IRCH, AIIMS, New Delhi



**Sameer Bhakhshi**  
Prof & Head  
Department of Medical  
Oncology  
IRCH, AIIMS, New Delhi

### CO-CHAIRPERSONS



**Sujata Satapathy**  
Professor,  
Clinical Psychology,  
Dept. of Psychiatry  
AIIMS, New Delhi



**Latha Venkatesan**  
Prof & Principal  
College of Nursing,  
AIIMS, New Delhi



**G. Padmaja**  
Prof & Head  
Centre for Health Psychology  
School of Medical Sciences  
University of Hyderabad



# NATIONAL CONFERENCE ON PSYCHOTHERAPEUTIC ASSESSMENTS AND INTERVENTIONS IN PSYCHO-ONCOLOGY

## CONVENER



**Barre Vijay Prasad**  
Assistant Professor,  
Clinical Psychology  
Department of Psychiatry  
AIIMS, New Delhi

## CO-ORGANISING SECRETARY



**Koushik Sinha Deb**  
Additional Professor  
Dept. of Psychiatry  
AIIMS, New Delhi



**Prabhat Singh Mallik**  
Additional Professor  
Medical Oncology  
IRCH, AIIMS, New Delhi



**Atul Batra**  
Additional Professor  
Medical Oncology  
IRCH, AIIMS, New Delhi



**Swati Kedia Gupta**  
Assistant Professor,  
Clinical Psychology  
Dept. of Psychiatry  
AIIMS – New Delhi

## SCIENTIFIC COMMITTEES



**Seema Mishra**  
Professor  
Dept. of Onco-Anesthesia  
& Palliative Medicine, IRCH,  
AIIMS, New Delhi



**Sachidanand Jee Bharti**  
Professor  
Dept. of Onco-Anesthesia  
& Palliative Medicine,  
IRCH, AIIMS, New Delhi



**Raja Pramanik**  
Additional Professor  
Medical Oncology  
IRCH, AIIMS, New Delhi



**Brindha Sitaram**  
Psyhco-Oncologist  
HCG Cancer Hospital  
Bangalore



# NATIONAL CONFERENCE ON PSYCHOTHERAPEUTIC ASSESSMENTS AND INTERVENTIONS IN PSYCHO-ONCOLOGY



**Yumnam Surbala Devi**

Associate Professor  
College of Nursing  
AIIMS – New Delhi



**Raghav Gupta**

Assistant Professor  
National Cancer Institute  
(Jhajjar)  
AIIMS, New Delhi



**Monika Sabharwal**

Tutor  
College of Nursing  
AIIMS, New Delhi

## TREASURERS

**Renu Sharma**

Child Psychologist  
Dept. of Psychiatry  
AIIMS, New Delhi

**Prasuna Shanmukha**

**Priya Lanka**  
Co-Founder and CEO,  
We Avec U Mental Health  
Organization, Noida

## MEMBERS

**Ajesh Kumar T.K,**

Associate Professor, College of  
Nursing AIIMS

**Krishna Kumar Sony,**

Associate Professor, Dept of  
Psychiatry, PGIMER

**Vijayaraghavan,**

Clinical Psychologist, JIPMER,  
Puducherry

**Vikas Sharma,**

Head & Associate Prof., SGT  
University, Gurgaon

**Manoj Bajaj,**

Associate Professor,  
Delhi University

**Shahzadi Malhotra,**

Associate Professor, IBHAS

## PUBLICATION & AWARDS

**Osheen Saxena**

**Mansi Chadha**  
**Nidhi Prate**

Project Research Scientist,  
Dept. of Psychiatry,  
AIIMS, New Delhi

## DELEGATION & COMMUNICATION

**Shreya Kulashrestha**

**Akanksha Yadav**  
**Ratnakar**

Ph.D. Scholars, Dept. of  
Psychiatry, AIIMS, New Delhi

## HOSPITALITY

**Rachna Mourya**  
**Usha Devi**

Project Research Scientist,  
Dept. of Psychiatry,  
AIIMS, New Delhi

## SPONSORSHIP & EXHIBITION

**Vidhi Khanna**  
**Jaspreet Mangat**

Project Research Scientist,  
Dept. of Psychiatry,  
AIIMS, New Delhi

## VENUE MANAGEMENT

**Ishita Goyal**  
**Aarushi Mathur**

Project Research Scientist,  
Dept. of Psychiatry,  
AIIMS, New Delhi



# NATIONAL CONFERENCE ON PSYCHOTHERAPEUTIC ASSESSMENTS AND INTERVENTIONS IN PSYCHO-ONCOLOGY

## ORGANIZING PARTNERS: WE AVEC U FOUNDATION

### ORGANISING SECRETARY



**Sundeep Katevarapu**  
Founder and Chief  
Managing Director,  
We AVEC U Mental Health  
Foundation, Noida

### TRESURER



**Prasuna Shanmukha  
Priya Lanka**  
Co-Founder and CEO,  
We AVEC U Mental Health  
Foundation, Noida

### Delegation & Communication



**Kumud Sapru  
Wangnue**



**Usman Ali**



**Sarbottam Raj**



**Ankur Pradhan**

### Publication & Awards

### Venue Management



**Sandeep Kakani**

### Sponsorship & Exhibition



**Mr. Taru Kaushik**

### Hospitality Committee



**Meghanaa Karanam**



# NATIONAL CONFERENCE ON PSYCHOTHERAPEUTIC ASSESSMENTS AND INTERVENTIONS IN PSYCHO-ONCOLOGY

## THEME TRACKS & SUB-THEMES

### TRACK 1 : PEDIATRIC PSYCHO-ONCOLOGY

- Cancer and developmental milestones
- Epidemiology of childhood cancers
- Epidemiology of mental and behavioural disorders in pediatric cancers
- Neurocognitive effects of childhood cancers
- Cancer in childhood and its impact on socio-emotional development
- Childhood cancers and physical self-esteem & self-concept
- Psychosexual development of children survived cancers
- Childhood cancer survivors
- Parents' perception, knowledge, attitudes, behaviours in treatment seeking
- Family and school-based psycho-oncology support services
- Quality of life in childhood cancers
- Disclosing or non-disclosing the illness to children: Why, when, and how?
- Tools and methods of assessments and evaluation
- Psycho-oncology interventions for children
- Psycho-oncology interventions for adolescents
- Integrated model of psycho-oncology support services in Indian hospitals
- Resilience and childhood cancer in different phases of treatment
- Catering psycho-oncology services to children with special needs
- Research and development in pediatric psycho-oncology





# NATIONAL CONFERENCE ON PSYCHOTHERAPEUTIC ASSESSMENTS AND INTERVENTIONS IN PSYCHO-ONCOLOGY

## TRACK 2: PSYCHO-ONCOLOGICAL EVALUATIONS & INTERVENTIONS FOR ADULTS

- Cancer and major depressive disorders
- Cancer and anxiety disorders
- Cancer and other mental and behavioural disorders
- Cancer and suicide
- Cancer and Covid-19
- Psycho-oncological aspects of cancer surgery
- Psychosocial impacts breast, prostate, pancreatic and liver, head & neck, and mouth cancer
- Multiple myeloma and mental health
- Cancer and reproductive health care
- Cancer and sexual functioning
- Screening and comprehensive tools of assessment and evaluation
- General psychological evaluation of cancer patients
- Innovative Screening Tools: Latest developments in psychological instruments
- Cancer coping and resilience
- Qualitative research in adult cancers
- Psycho-oncological aspects of financial burden of cancer treatment
- Psychiatric emergencies in oncology patients
- What oncology residents need to know about psychiatric medications during cancer treatment?
- Evidence based psycho-oncological interventions (Crisis management, CBT, JPMR, MBCT, DBT, MT, FT, Art and Music therapy, etc.) and supportive care
- Transcendental meditation for stress reduction and relaxation
- Spiritual psychotherapy integrating spiritual beliefs and practices into therapy
- Technology-enabled psycho-oncology assessment and intervention
- Others
- Screening and comprehensive tools for geriatric cancer populations
- Specific requirements in designing psycho-oncological interventions for elderly with cancer





# NATIONAL CONFERENCE ON PSYCHOTHERAPEUTIC ASSESSMENTS AND INTERVENTIONS IN PSYCHO-ONCOLOGY

## TRACK 3: NURSING AND PSYCHO-ONCOLOGY

- Effective communication with patients and caregivers
- Experience of breaking the bad news
- Cultural sensitivity in psycho-oncology nursing
- Nursing approaches to enhance resilience
- Ethical and legal issues in nursing care in oncology settings
- Case studies of successful interdisciplinary collaborative psych oncology nursing care
- Identifying patients with mental health conditions
- Technology & innovations in psych-oncology nursing
- Education and training of nurses in psycho-oncology service
- Nursing care for survivors and long-term psycho-oncology nursing services
- Home-based care in psycho-oncology nursing

## TRACK 4: PALLIATIVE CARE & PSYCHO-ONCOLOGY

- Pediatric palliative care: What exists and What is needed?
- Adult palliative care: The current status
- Mental health conditions among palliative care patients
- Psychological interventions for Pain Management in Palliative Care
- Quality of Life through Palliative Care
- Interdisciplinary Approaches to Palliative Care
- Psycho-oncological assessments in palliative services
- Innovation in culturally sensitive palliative care in India
- Psycho-oncological models of psychological and behavioural interventions
- Palliative care models and Indian set up
- Hospice services
- Home-based palliative care services
- Feasibility, cost, availability of integrative palliative services
- Making end-of-life more acceptable with religious and spiritual methods
- Reminiscence therapy and palliative care: present and future in India
- Innovations in Technology for Palliative Care
- Mourning and bereavement rituals: A new trend in palliative care service
- Ethical Considerations in Palliative Care



# NATIONAL CONFERENCE ON PSYCHOTHERAPEUTIC ASSESSMENTS AND INTERVENTIONS IN PSYCHO-ONCOLOGY

## TRACK 5: MODELS OF PSYCHO-ONCOLOGY & INDIAN SYSTEM OF MIND-BODY FOCUSED MODELS

- Psycho-oncology: Where do we stand in global platform?
- Integrated data storage and accessibility in psycho-oncology research
- International and national guidelines
- Genetic counselling
- Cultural adaptation and validation of western and Asian models of care
- Why and where do we lag behind in implementing psycho-oncology models
- Implementing mind-body techniques into cancer care
- Mindfulness based meditation in cancer care
- Mind-body focused techniques such as Yoga and psychophysiology in cancer patients
- Career of Clinical Psychologists in Cancer Care
- Education and training models in Psycho-oncology
- Training and education of other professionals in psycho-oncology

## WHO SHOULD JOIN THIS CONFERENCE?

The National Conference on Psychotherapeutic Assessments and Interventions in Psycho-Oncology is ideal for:

- **Healthcare Professionals:** Psychiatrists, Oncologists, Palliative Care Specialists, Nurses, Occupational and Physiotherapists, and Social Workers.
- **Mental Health Experts:** RCI Certified Clinical and Rehabilitation Psychologists, Psycho-Oncologists, Counselors, and Therapists.
- **Academics and Researchers:** University Faculty, Research Scholars, and Students in psychology, oncology, and related fields.
- **Healthcare Administrators and Policy Makers:** Hospital Leaders and Public Health Officials focused on integrating mental health into cancer care.
- **NGOs and Professional Bodies:** Organizations involved in mental health, cancer care, and patient advocacy.
- **International Delegates:** Global health professionals and organizations seeking collaboration in psycho-oncology.
- **Patient Advocates and Survivors:** Individuals engaged in supporting cancer patients' mental health and well-being.
- **Corporate Wellness Providers:** EAP and workplace mental health advocates supporting employees with cancer.

Join us to explore the latest developments and collaborate with experts in this multidisciplinary field.



# NATIONAL CONFERENCE ON PSYCHOTHERAPEUTIC ASSESSMENTS AND INTERVENTIONS IN PSYCHO-ONCOLOGY

## CALL FOR PAPERS

- The Conference includes scientific sessions of scientific papers /poster presentations, symposium/ free papers/ debates giving an equal chance for every delegate to share their research findings with the audience.
- The paper publication is subject to acceptance upon the standards of paper quality. The registration fee does not include the Article Processing Charges.
- Certificates will be immediately provided to participants, session presenters, and chairpersons.

### For Guidelines of Abstract Submission (Scientific Papers/ Symposiums/ Posters/ Debates/ Free papers):

- Abstracts must be <= 250 words; A4 size word format, 2.0 spacing, APA 7 format.
- The abstract must include Title, Author's names and Institutional affiliation, which must include the Background, Objectives, Method, Results, Conclusions and 3 keywords of the study.
- Scholars interested in presenting research papers/ symposiums/ posters/ debates on the theme or any sub theme of the conference are required to submit their abstract in soft copy by email at [ncpo2025@gmail.com](mailto:ncpo2025@gmail.com)
- The mail must include: **Subject:** NCPO2025 - Abstract Submission - Authors Name (mention number of authors including yourself)
- Eg: NCPO2025 - Abstract Submission - Dr. Rai Singh (2)
- In the mail body please attach your registration form.
- Only the name of author will be mentioned on the certificate. If any co-author requires the certificate for themselves, they need to register separately in the same mode.
- We encourage you to maintain the trail mail during the conversation.

**Please Note:** Please follow the guidelines mentioned above, otherwise the abstract will not be considered.

Free papers will be selected by scientific team and selected papers will be intimated.

Early Bird Deadline for Abstract Submission	<b>31st October 2024</b>
Last Date for 2nd Call of Abstract Submission	<b>15th November 2024</b>
Deadline for Full Paper Submission	<b>30th November 2024</b>

## PUBLICATION & AWARD OPPORTUNITIES

### Categories of Publications:

UGC Care Listed Journal

Taylor and Francis book

ISSN registered Peer Reviewed Journal

### Categories of Awards:

Best Paper Award - Research Scholars /  
Professionals Category

Best Paper Award - Students Category

Best Presentation Award

**For updated information, Visit: <https://ncpo2025.in/>**



# NATIONAL CONFERENCE ON PSYCHOTHERAPEUTIC ASSESSMENTS AND INTERVENTIONS IN PSYCHO-ONCOLOGY

## PROPSAL FOR PRESENTATION

- Participants are encouraged to submit proposals under various categories, including workshops, symposia, roundtable discussions, debates, paper presentations, and poster displays. Each category provides a unique opportunity to contribute to the conference's aim of fostering professional growth through psychological insights. Below are the details for each submission type:
- **1. Workshops (60 minutes):** We welcome proposals for practical, hands-on workshops aimed at oncologists, psychologists, educators, researchers, and practitioners. These workshops should focus on innovative techniques, tools, or methods related to applied psychology that can enhance professional practice. Presenters are encouraged to offer experiential learning and practical applications that attendees can directly implement in their professional environments. The workshop should be engaging, interactive, and aligned with the conference's main theme.
- **2. Symposia (90 minutes):** Proposals for symposia should consist of up to four interconnected presentations on a specific aspect of the conference theme. Each presentation should address a unique angle of the selected topic, fostering a comprehensive discussion on innovative approaches or research developments in applied psychology. Multidisciplinary panels are highly encouraged, and the convenor of the symposium must be a psychologist. The goal is to promote deep, focused discourse on cutting-edge psychological applications and professional practices. The symposium organiser should submit the symposia abstract on behalf of all presenting authors. The symposium abstract should follow the requirement of individual submissions. The symposium organiser should also submit a supplementary file which contains information of each presentation, including the major theme of the symposium. Do not submit the Symposium Proposal if you do not have all presentations from your symposium participants.
- **3. Roundtable Discussions (45 minutes):** We invite proposals for roundtable sessions designed for in-depth discussion on specific topics within themes of conference. Presenters will initiate a dialogue on relevant research, trends, or professional challenges and engage participants in thoughtful discussion. These intimate sessions are intended to encourage sharing of ideas, elicit feedback, and build collaborative networks among professionals.
- **4. Debates (45 minutes):** Debate proposals should focus on current and potentially controversial issues on the themes of conference. Each debate should feature two opposing perspectives on a specific question related to the conference theme. The debate format will allow for structured argumentation, rebuttals, and audience participation. Proposals should clearly outline the topic and propose speakers or teams representing contrasting viewpoints, fostering critical thinking and exploration of diverse perspectives.





# NATIONAL CONFERENCE ON PSYCHOTHERAPEUTIC ASSESSMENTS AND INTERVENTIONS IN PSYCHO-ONCOLOGY

- **5. Papers (10 minutes including questions from participants):** Paper presentation proposals are welcome from researchers and practitioners. Each paper should be grounded in recent research or practical innovations. Presenters will have 10 minutes to present their findings, followed by a brief Q&A session. Abstracts should be concise, around 200 words, detailing the aim, methodology, and results of the study or practice. Selected papers will be eligible for a best presentation award and a certificate of appreciation.
- **6. Poster Presentations:** Proposals for poster presentations should feature visual displays of research findings, new practices, or theoretical models in applied psychology. Posters should be clear, engaging, and effectively communicate the essence of the work in a visual format. Each poster must be accompanied by a brief synopsis, and presenters are encouraged to provide additional materials like brochures or handouts. Poster dimensions should not exceed 30 x 20 inches. Best poster awards will be given based on content, clarity, and presentation.
- **7. Publication of Papers:** Full paper submissions are invited for publication consideration in the peer-reviewed Journal, UGC Care and Scopus Indexed. Papers should be approximately 5000 words and follow APA 7th edition guidelines, including tables and references. The submitted papers will undergo a peer review, and selected papers will be published in the conference's special edition. If a paper is selected for publication, the author will be notified separately.
- **8. Oral Poster Presentation (7 minutes):** Each presenter will have 7 minutes to provide an overview of their poster, summarizing key points such as research objectives, methodologies, findings, and practical implications. The oral presentation will be followed by a brief Q&A session, allowing the audience to engage with the content. Posters should visually depict the research in an attractive and accessible format, and the oral explanation should highlight the essential aspects of the work. Abstracts for the oral poster presentations should be approximately 150-200 words, providing a snapshot of the topic being presented. This format is ideal for engaging participants with visually rich content in a limited time.
- Scholars interested in presenting research papers/ symposiums/ posters/ debates on the theme or any sub theme of the conference are required to submit their abstract in soft copy by email at [ncpo2025@gmail.com](mailto:ncpo2025@gmail.com)
- The mail must include: Subject: NCPO2025 - Abstract Submission - Authors Name (mention number of authors including yourself) In the mail body please attach your registration form.

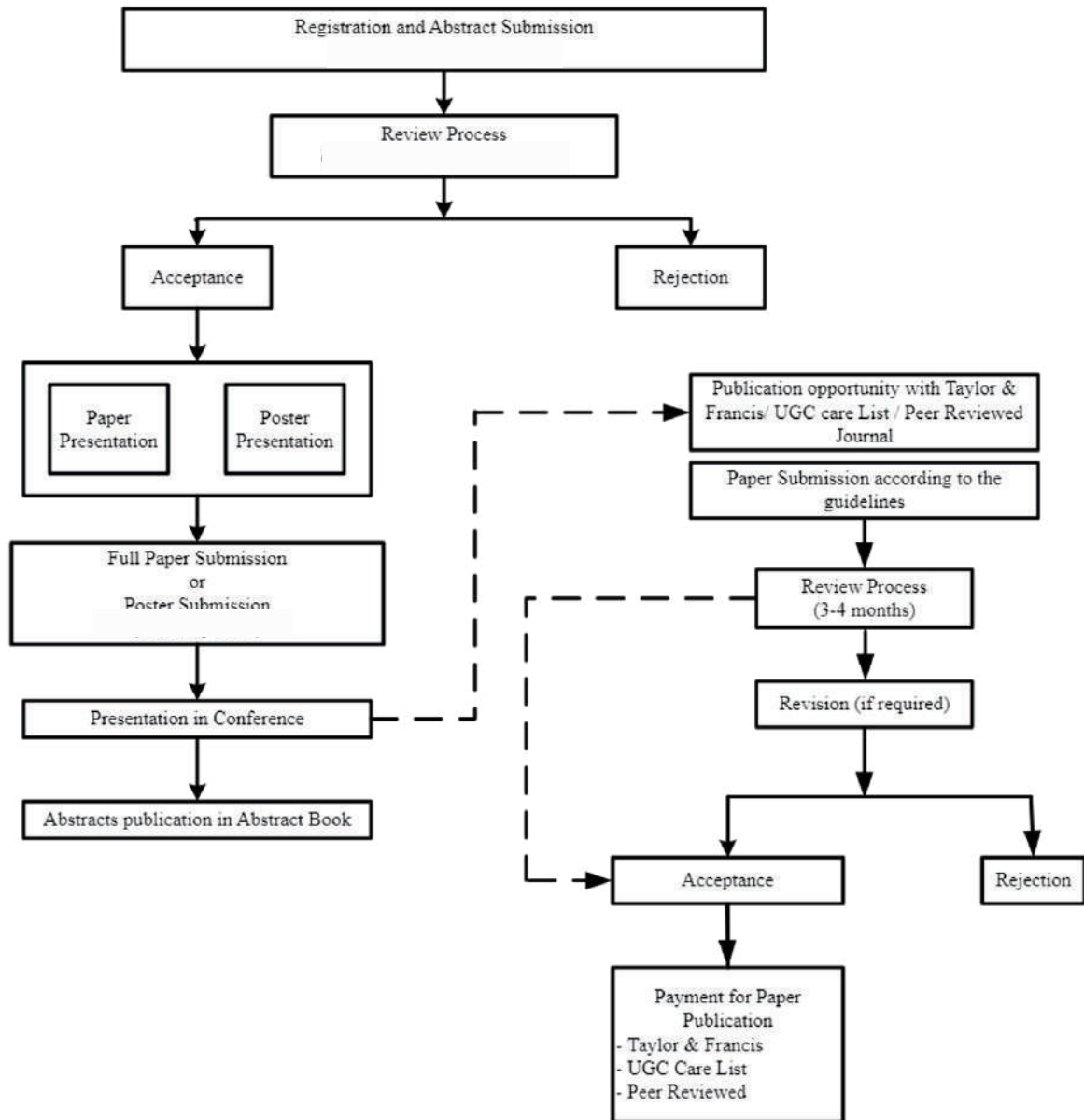
**For updated information, Visit: <https://ncpo2025.in/>**



# NATIONAL CONFERENCE ON PSYCHOTHERAPEUTIC ASSESSMENTS AND INTERVENTIONS IN PSYCHO-ONCOLOGY

## PROCESS OF ACCEPTANCE

The following process will be considered for paper acceptance and publication:



**Details regarding RCI, CRE & INC Points will be updated soon**



**Note:** Selected papers from the presentation list will be recommended for Taylor and Francis conference proceeding book. The payment for the same is separate and will be charged on acceptance of paper by organising and publishing team.

*Details regarding Post-Conference will be updated soon*



# NATIONAL CONFERENCE ON PSYCHOTHERAPEUTIC ASSESSMENTS AND INTERVENTIONS IN PSYCHO-ONCOLOGY

## REGISTRATION DETAILS

Delegate category	Early Bird Discount till 30th September 2024	From 1st Oct to 30 Nov 2024	From 1st Dec 2024	On-Spot
<b>Students</b>	Rs 2500	Rs 3500	Rs 4000	Rs 4500
<b>Delegates</b>	Rs 4000	Rs 5000	Rs 5500	Rs 6000
<b>International delegates</b>	\$100	\$150	\$180	\$200

- The Registration fees mentioned above are per person and are exclusive of travel and accommodation expenses.
- All the payments are to be made through payment details given in the registration form link. No refund will be issued.
- For the 3 days, lunch and tea/coffee (once a day) would be provided to the delegates along with the admissions to inaugural function, scientific sessions and valedictory function.
- Conference kit includes conference bag, notepad, pen, ID Card (only for those attending the conference physically).
- The Organizing Committee does not bear any responsibility of the accommodation of delegates. Suggestions of the hotels nearby will be given.
- For delegates attending the conference offline, Certificates will be distributed from 3rd day afternoon.

## Payment Details

### Account Transfer:

Account Holder- We Avec U  
Account Number- 924020049246422  
IFSC- UTIB0004257  
Branch- Sector 25, Noida  
Bank Name- Axis Bank  
Account Type- Current

### UPI Payment

drksaryan-11@oksbi

WE AVEC U



9717063414@okbizaxis

**For updated information, Visit: <https://ncpo2025.in/>**

For Registration,  
**[CLICK HERE](#)** or <https://forms.gle/bEweUuBHRQsYfipr9>



# NATIONAL CONFERENCE ON PSYCHOTHERAPEUTIC ASSESSMENTS AND INTERVENTIONS IN PSYCHO-ONCOLOGY

## ABOUT THE ORGANISING PARTNER: We Avec U Mental Health Foundation

For more than 9 years, **We Avec U Mental Health Foundation** have been relentlessly working in the field of mental health. We aim to destigmatize mental health in India and bring change from the grassroots level. We believe that mental health is just as important as physical health and that everyone deserves access to quality mental health services.

Our foundation is working on multiple initiatives related to mental health awareness and well-being. These initiatives include counseling and therapy sessions, cancer awareness programs, support groups, mental health awareness workshops, psychoeducation seminars, advocacy programs, and more. Our mission is to foster a society where mental health is as valued as physical health, and where individuals suffering from mental illnesses receive the support, understanding, and treatment they deserve.



Psycho-Oncology Awareness

Psycho-Education Workshops



Free Counselling Sessions

Mental Health Advocacy



**Contact Details:** 9169179918 / 8448789608

**Email:** [trust@weavec.org](mailto:trust@weavec.org) / [ncpo2025@gmail.com](mailto:ncpo2025@gmail.com)

**For updated information, Visit:** <https://ncpo2025.in/>



**CLICK HERE TO JOIN THE WHATSAPP GROUP FOR FURTHER UPDATES**